

3525 Electronic Locking Rack Handle



WORKING TOGETHER WITH
SERVOCELL

3525 Electronic
Locking Rack Handle



**Lock engaged
Handle closed**



Secure Cabinet

**Lock retracted
Handle closed**



Electronically
unlock

**Lock retracted
Handle released**



Manually operate
handle

**Lock engaged
Handle released**



DIN lock manual
override

Electronic Locking Rack Handle

The electronic locking rack handle provides the functionality of a manual latching system with the added benefit of electronic locking for access control and remote monitoring.

It can be combined with any access control device for a basic self contained electronic access solution.

Alternatively, the electronic rack handle can provide access control to networked rack control and monitoring systems for addressable remote access control over the internet.

Integrated lock sensors provide local LED indication plus generate output signals for remote access monitoring.

Features


- Remote lock and unlock control
- Single or multi-point locking
- Low power, gear motor driven mechanism
- Momentary or continuous lock actuation
- High Security DIN lock for mechanical key override
- Fits industry standard panel preparations
- Accommodates both left and right hand doors
- 78.7" (2000mm) Wire Harness and Hardware Kit included
- Product shipped with 3 keys (keyed alike)
- 1 Year Warranty


Highlights

- Integrated sensors detect lock and handle status for monitoring and alarm functions
- Low energy consumption (Less than 200mA at 12VDC)
- Activated via any 3rd Party Control System (Access Control, PDU, SCADA)

Optional Accessories

NOT REQUIRED FOR MOST RETROFIT APPLICATIONS

	Gear Box (for multi-point system)	
	3525-MPLH	Left Hand
	3525-MPRH	Right Hand

	CAMS	
	Grip Measurement	Cam length
1-1/2" (38mm)	3525-GR3815	1.77" (45mm)
0.61" (15.5mm)	3525-GR3815	-
0.69" (17.5mm)	3525-GR3817	-
0.77" (19.5mm)	3525-GR3819	3525-GR4522
0.85" (21.5mm)	3525-GR3821	3525-GR4524
0.93" (23.5mm)	3525-GR3823	3525-GR4526

(Consult RCI if required)

Specifications

3525 Electronic Locking Rack Handle



WORKING TOGETHER WITH
SERVOCELL

Specifications

Material & Finish

Housing, handle, mounting bracket:
Glass-filled nylon, black
Shaft, rotation limiter: Die-cast zinc,
bright sealer

Electrical Specifications

Recommended operating voltage:
12VDC to 24VDC
Typical operating current:
Less than 200mA at 12 VDC
Peak / stall operating current: 1 Amp
Standby current: 50mA Max.
Output signal rating: 200mA Max. load

Connector Pin Assignment

PIN 1: Ground (-)
PIN 2: Power (+)
PIN 3: Not Used
PIN 4: Control signal
PIN 5: Electronic Lock status output
PIN 6: Mechanical lock status output

Mating Connector Detail

Crimp socket
Crimping contact for socket
24 AWG wire minimum recommended

NOTES

For grip ranges .61"-.73" (15.5-18.5mm)
Max. cam length of 1.5" (38mm).
Frame edge distance of 1.18" (30mm)

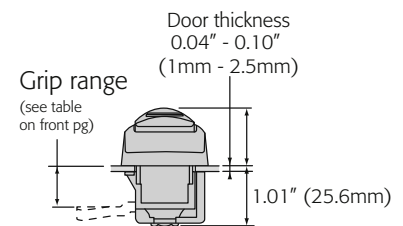
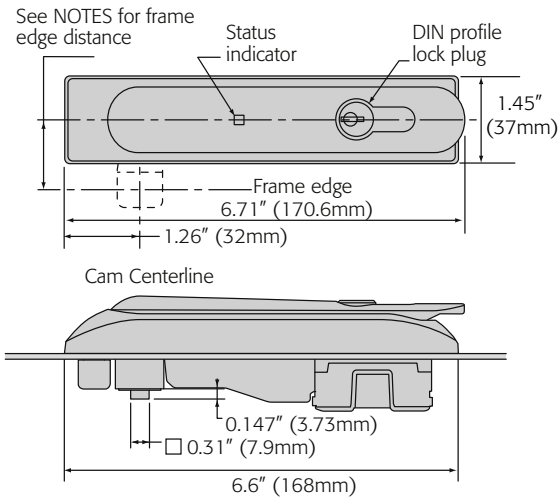
For grip ranges greater than .73" (18.5mm)
Max. cam length of 1.77" (45mm)
Frame edge distance of 1.46" (37mm)

For multipoint systems, select right or left
hand gear box part number from table.

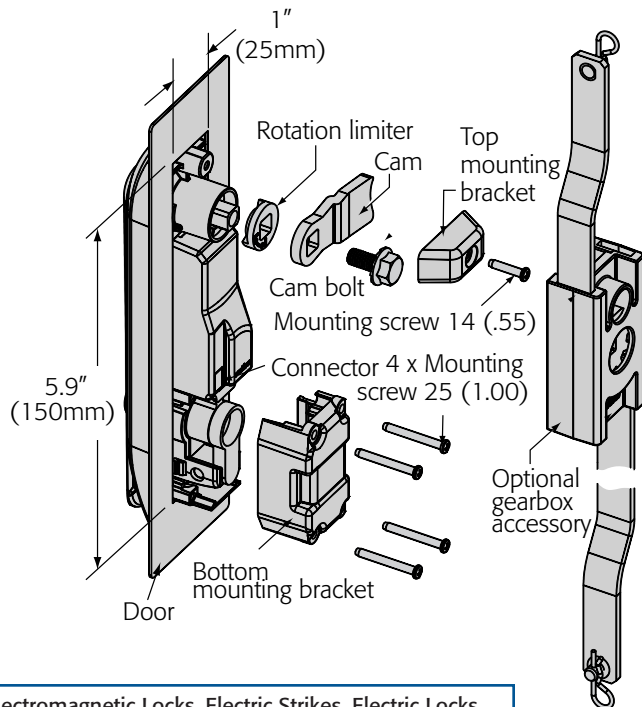
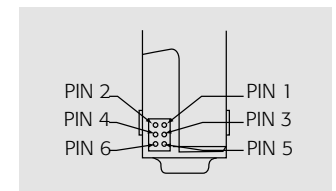
Product shipped with 3 keys (keyed alike)

Overall Dimensions:

6.69"H x 1.45"W x 1.98" D
(170mm x 37mm x 50.25mm)



Connector Detail



RCI also offers a complete line of Electromagnetic Locks, Electric Strikes, Electric Locks Power Supplies, Switches, Keypads & Readers, Exit Devices, Systems & Door Hardware.