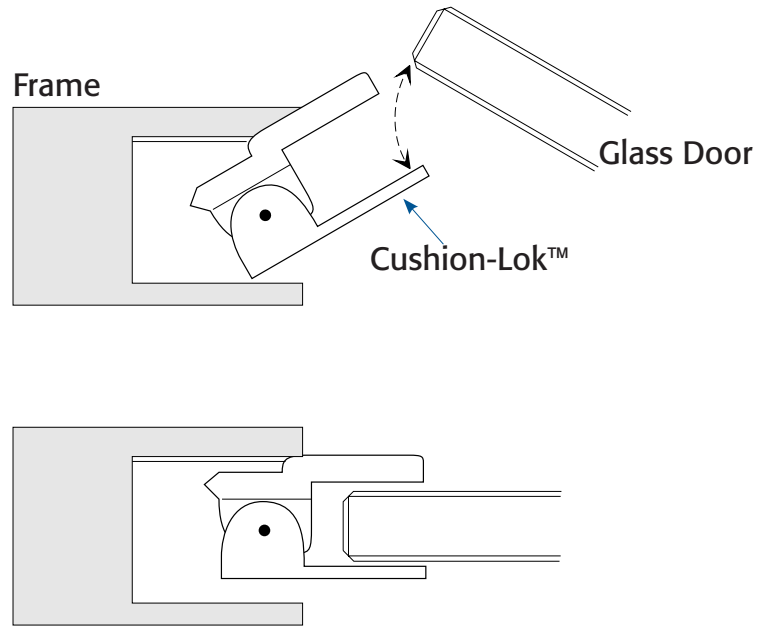




WORKING TOGETHER WITH  
**SERVOCELL**

3 Series Commercial Grade  
Cushion-Lok™ for Tempered Glass Doors  
with Aluminum, or Hollow Metal Frames

**Dimensions**  
6-5/16" x 15/16"  
(160mm x 24mm)



## Features

- Unique shock-absorbing spring loaded pivot waits in open position ensuring a gentle closure and locking of tempered glass doors
- No door preparation required for glass doors. The glass is "captured" by the Cushion-Lok™
- Adjustable for glass thickness from 11/32"–15/32" (9-12mm)
- Field Selectable 12/24 VDC
- Use on single or pairs (requires two locks) of glass doors with frames around the opening
- Shallow depth design 1-1/4" (32mm)
- All locks are "fail unlocked" by fire alarm or any power loss, ensuring life safety
- Electrical design prevents damage due to crossed wires
- Latch monitor switch option
- Stainless steel faceplate
- Non-handed

## Glass Door Lock

RCI's solution to the dilemma of controlling and securing tempered glass doors (without rails). Our 3371 Cushion-Lok™ securely controls a glass door while remaining unobtrusive.

The body of the lock mortises into the frame and the two-part spring loaded pivot gently cushions the glass door as it closes and locks, permitting electrical control of the glass door while maintaining security and architectural aesthetics.

## Options

LMS – Latch Monitor Switch

**Note:** Cushion-Lok™ Glass Door Locks are available by special order only. Please allow 12 weeks for delivery

## Highlights

- No preparation required for glass doors
- Shock-absorbing action
- Non-handed (reversible)
- 3-year limited warranty

## Applications

- Commercial Centers
- Industrial Buildings
- Educational Facilities
- Health Care Facilities
- Retail Outlets
- Office Complexes

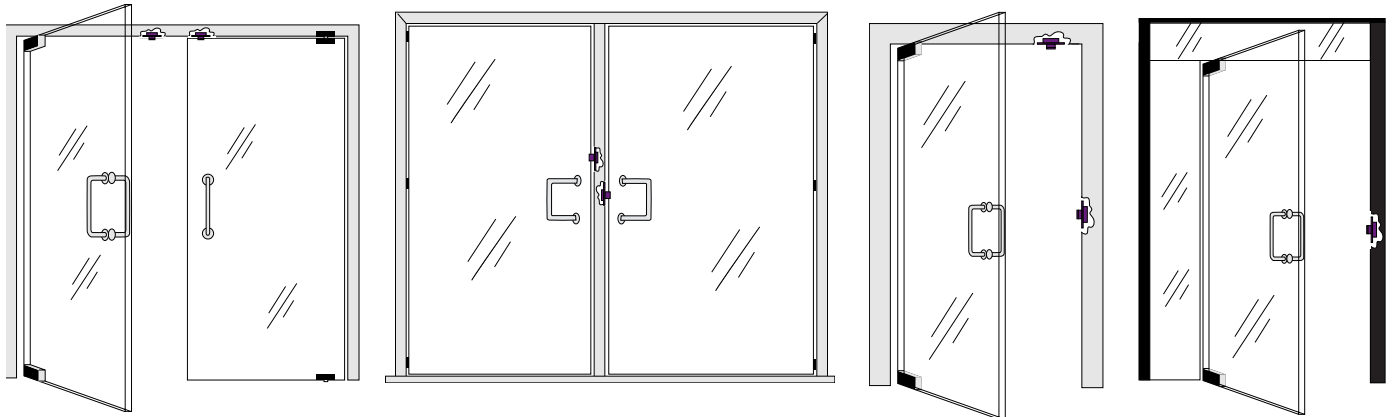
# Specifications

Fail Unlocked **3371**



WORKING TOGETHER WITH  
**SERVOCELL**

## CUSHION-LOK™ FOR TEMPERED GLASS DOORS WITH ALUMINUM OR HOLLOW METAL FRAMES



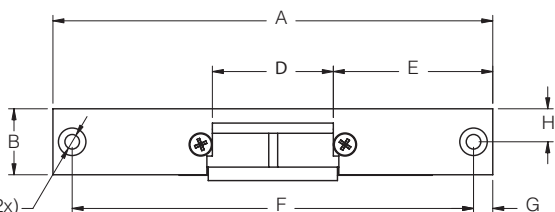
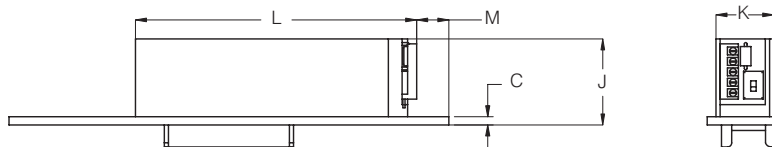
### Specifications

Model	Mode	Voltage	Current	Duty	Sound	Amps	Ohms
3371	Fail Unlocked	12V	DC	Continuous	Silent	0.21	58
3371	Fail Unlocked	24V	DC	Continuous	Silent	0.11	230

Fail Unlocked = Fail Safe = PL; DC = Direct Current; Intermittent Duty = Energized less than 1 min.; Continuous Duty = Energized 1 min. or more

### Profiles

Measurement	A	B	C	D	E	F	G	H	J	K	L	M
Fractional, inches	6-5/16	15/16	1/8	1-23/32	2-9/32	5-3/4	9/32	15/32	1-7/32	13/16	4-1/32	15/32
Decimal, inches	6.299	0.945	0.118	1.732	2.283	5.748	0.276	0.472	1.232	0.827	4.028	0.461
Metric, mm	160.0	24.0	3.0	44.0	58.0	146.0	7.0	12.0	31.3	21.0	102.3	11.7



**NOTE:** Site dimensions are the installer's or frame manufacturer's responsibility. Horizontal centerlines are located by bolt location. Not to scale. Specifications are subject to change without notice.

**NOTE:** Not to scale. Specifications are subject to change without notice.