

Battery Powered Locks

Fail Locked **CL2**

Battery Powered Cabinet Lock
with Access Control



WORKING TOGETHER WITH
SERVOCELL

Dimensions

3-5/8" x 3-13/16" x 1/2"
(91.5 x 96.8 x 11.7mm)



Features

- Ideal for cabinets, drawers, carts and other enclosures where power is not available
- 180lbs (82kgs) holding force
- Integral battery - up to 3 years or 350,000 operations between battery changes
- Low Battery warning LED remains for 50,000 operations
- iButton® key access control (up to 160 Users)
- Simplified key management makes programming easy
- Suitable for both Wood and Metal Applications
- Black Finish
- 6V - J cell alkaline battery
- Fail locked
- Emergency mechanical override in the event of a lost key
- Once programmed the add and delete keys can be assigned and used on multiple CL2 cabinet locks
- Includes four different colored iButtons® for programming (add, delete, user and shadow key)

Battery Operated Cabinet Lock with Access Control

Our battery operated "Lock-in-a-Box" makes installation **easy** by eliminating the need for a power source in situations where power is not available or difficult to acquire.

The CL2 battery operated cabinet lock comes ready for a variety of applications. Convenient built-in iButton® key management makes for easy programming, while the battery provides up to 350,000 operations (low battery warning included). With 180lbs (82kg) holding force this versatile cabinet lock is ideal for lockers, carts, displays and cabinets.

Highlights

- Ideal for cabinets, drawers, carts and other enclosures where power is not available
- Easy installation
- Easy to program
- 1 year limited warranty

Applications

INTERIOR

- Retail
- Health Care
- Filing Cabinets
- Drug Cabinets
- Jewelry Cases
- Key Cabinets
- Machine Access
- Museum Display
- Vending Machines Covers
- Government
- Commercial
- Residential
- Cash Drawers
- Showcases
- Desk Drawers
- Computer Carts

Accessories

3511iB5PK.....5 Pack User/Shadow iButtons®
(includes 5 user/shadow keys)

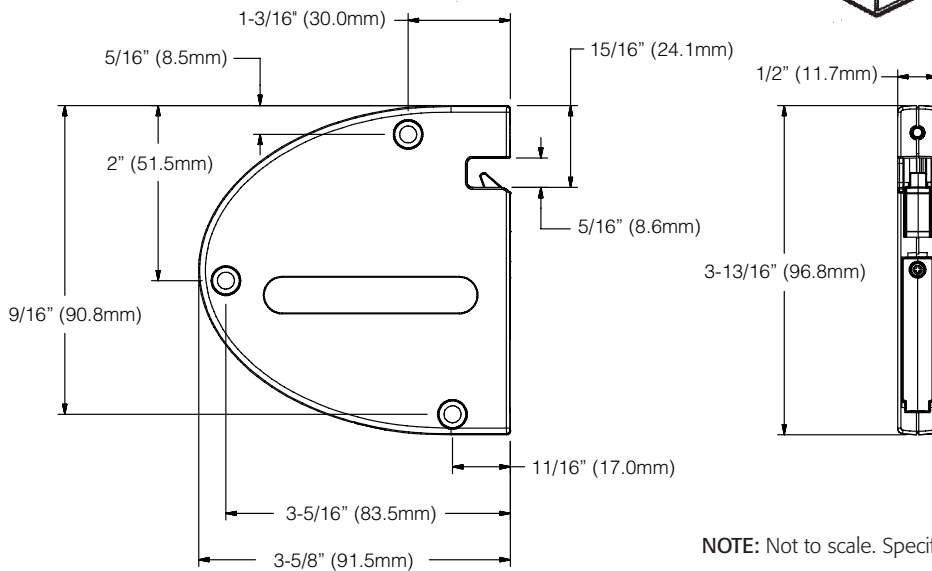
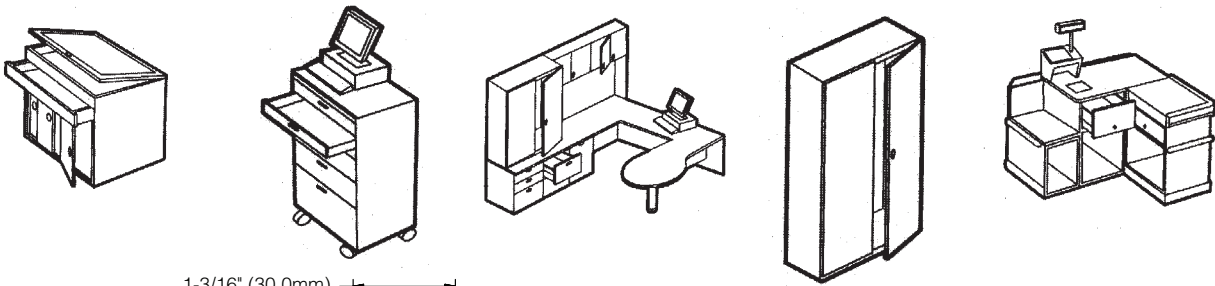
Specifications

Fail Locked CL2



WORKING TOGETHER WITH
SERVOCELL

Description of Features	
Mode of Operation	Fail Locked
Cycle Rating	100,000
Holding Force	180lb (82kg)
Operating Temperature	23° to 131°F (-5° to 55°C)
Power Requirements	6V - J cell alkaline battery
Low Battery Warning	LED flashes 50,000 operations



NOTE: Not to scale. Specifications are subject to change without notice.

