



## CL2iA Audit Trail

### ... to record

- Which key was presented to the lock, including unauthorised keys!
- To whom that key belongs,
- When it was presented.

### ... with the added benefit of

- PC based enrolling and assigning of keys and locks.



**CL2iA Audit Trail will be available from May 2008.**

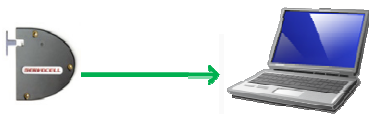
## Overview

---

### Storing Information

Each lock automatically stores a maximum of 100 rolling transactions. Once the 101<sup>st</sup> transaction is conducted, the 1<sup>st</sup> transaction is removed from memory – and so on. As a special requirement, the maximum number of store transactions may be increased.

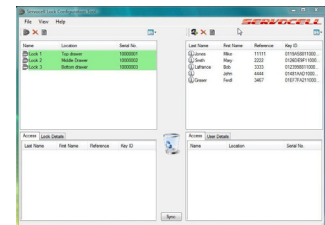
### Retrieving Information



- Data downloaded from the lock into the iButton® Command Key.
- Single Command Key used to retrieve data sequentially from multiple locks, thus reducing the number of keys held by the administrator/s.
- Data then uploaded to the PC.

### Presenting Information

- Data presented in a user friendly format.
- Or integrated into user's specific application /database.
- Audit trail data may be formatted to show data by Lock or by Key holder.



### PC Based Programming of Locks and Keys



- After a key has been initialised onto the system, its status and access rights may be controlled via the PC, without need for the key to be present.
- Programming of multiple locks from the PC via iButton Command key.

## Contents

---

- 1 Components of the system
- 2 Programming locks and keys onto the system
  - a Load the software
  - b Assigning locks and keys
  - c Linking locks and keys
  - d Deleting (lost) keys
- 3 Audit Trail
  - a Data storage in the lock
  - b Data transfer from lock to PC
  - c Data presented as management information
  - d Synchronising PC and Lock clocks





